



# BUNDUSUITE

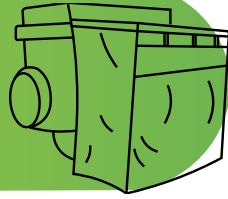
MANUAL

---



PROUDLY MANUFACTURED  
IN SOUTH AFRICA

# BUNDUSUITE



**Please familiarise yourself with this manual, as proper use of this product is directly linked to the warranty.**

The BunduSuite is the latest product on offer from Bundutec – a Shower Cubicle/dressing room for your privacy needs.

It pitches with our signature Pro-Pitch technology, simply unzip the bag, roll down the canvas and by pulling the canvas tabs towards you, you pitch the Suite.

It has an additional frame in the bottom for extra rigidity so that the canvas doesn't blow against you in windy weather.

It offers a 2.1m x 1.3m area, to give additional space, making it one of the largest on the market.

It weighs in at 7kg, is made from Alias canvas – a high performance material which is UV treated – so no fading!

The BunduSuite can mount to any roof rack, but it is specifically designed to mount to the BunduTop – and its ease of use is a testament to the BunduTec brand's innovation.

There is a zip on one corner of the Suite for easy access, and all the materials used in this design are high quality, durable and made to last!

## HOW TOS

### USING THE BUNDUSUITE:

It pitches with our signature Pro-Pitch technology, simply unzip the bag, roll down the canvas and by pulling the canvas tabs towards you, you pitch the Suite.

The Suite is fitted with two gas struts, that extend the frame outwards, offering full rigidity.

At the bottom of the frame there will be flat bars inside the canvas, with velcro edges sticking out.

Using your hand, simply stick the velcro edges together for a rigid frame at the bottom – now your structure is rigid and offers wind resistance – the canvas can't flap around in windy weather.

To put away the Suite, simply follow the instructions in reverse – undo the Velcro on the bottom edge, push the center of the side frame inwards, and gripping the top bar firmly simply push toward your bag.

The whole mechanism will fold away until it is flush with your vehicle.

Simply roll up the canvas, use the Velcro straps to secure it in place, and zip up your bag.

### FITTING THE BUNDUSUITE:

Simply line up the BunduSuite brackets on the side of your BunduTop, mark the holes in the bracket.

Simply drill through and rivet with 4.8mm x 13mm sealed rivets. Attach the bracket on the Suite to the Bracket on the BunduTop with a 6mm bolt and nut.

### BUNDUSUITE MOUNTED HERE MOUNT TO ROOFRACK



**THE GUARANTEES AND WARRANTIES DO NOT COVER USER ERROR**

# CONTACT US

By phoning the office, Front Desk can follow up on all calls and make sure they are attended to.

## South Africa

### BunduTec

Front Desk

Tel: +27 6 3782 7667

Email: [info@bundutec.co.za](mailto:info@bundutec.co.za)

Manufactured in South Africa

## Australia

### Bundutec Australia

Tel: +61 414 500 430

Email: [sales@bundutec.com.au](mailto:sales@bundutec.com.au)

## United Arab Emirates + Oman

### The Great White

Tel: +97 15 0350 2735

Email: [hello@tgw.ae](mailto:hello@tgw.ae) | [mksbusinesswork@gmail.com](mailto:mksbusinesswork@gmail.com)

## Europe & United Kingdom

### Tuff-Trek Ltd

Tel: +44 078 6329 5172

Email: [dara@tuff-trek.com](mailto:dara@tuff-trek.com)

## Kenya

### Alan Brooks

Tel: +25 47 4363 4921

Email: [brooks.nairobi@gmail.com](mailto:brooks.nairobi@gmail.com)

## Namibia

### Offroad Center Windhoek

Tel: +26 4 6123 7532

Email: [offroad@afol.com.na](mailto:offroad@afol.com.na)

## Bushwhackers Campworld Swakopmund

Tel: +26 4 6440 0396

Email: [swakop@nambush.com](mailto:swakop@nambush.com)

## Bushwhackers Windhoek

Tel: +26 46 125 8760

Email: [simon@nambush.com](mailto:simon@nambush.com)

## United States of America

### BundutecUSA,

Email: [rory@bundutecusa.com](mailto:rory@bundutecusa.com)

Tel: +1 319-234-0071

## Canada

### Wild Coast Camping Gear

Email: [rtt@wildcoasttents.com](mailto:rtt@wildcoasttents.com)

Tel: 902-467-0250

